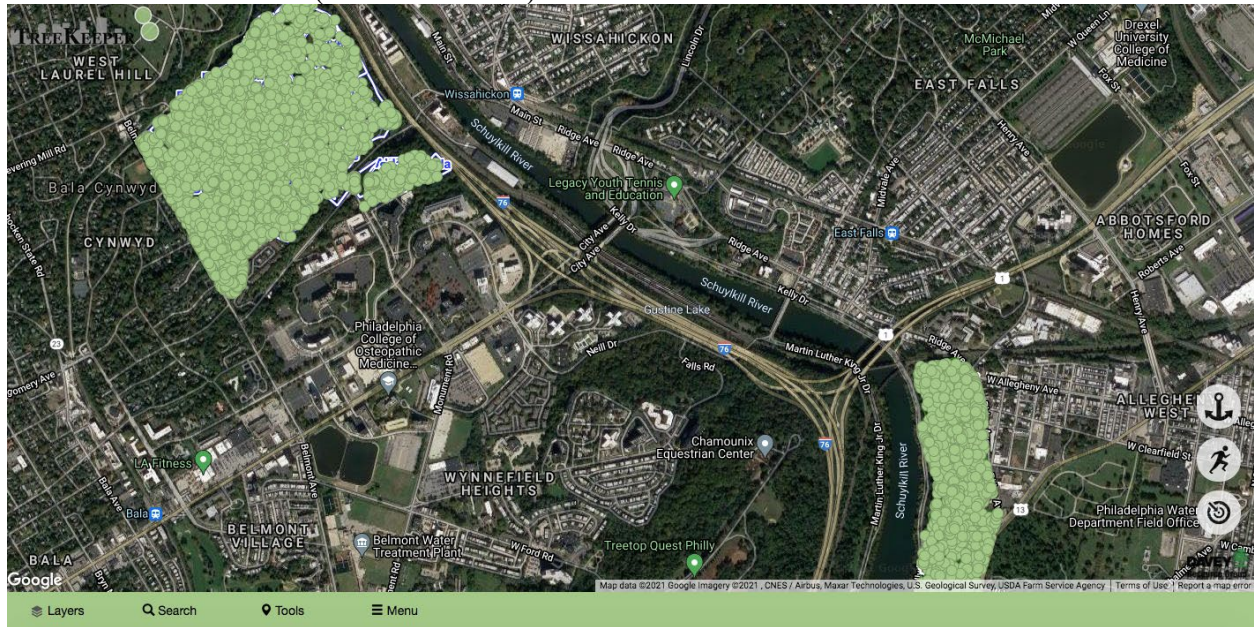


# HOW TO USE TREEKEEPER SOFTWARE

## Exploring the Tree and Shrub Collection of the Arboretum At Laurel Hill

<https://westlaurehillcem.treekeepersoftware.com/>

### INITIAL VIEW (Mobile Version)



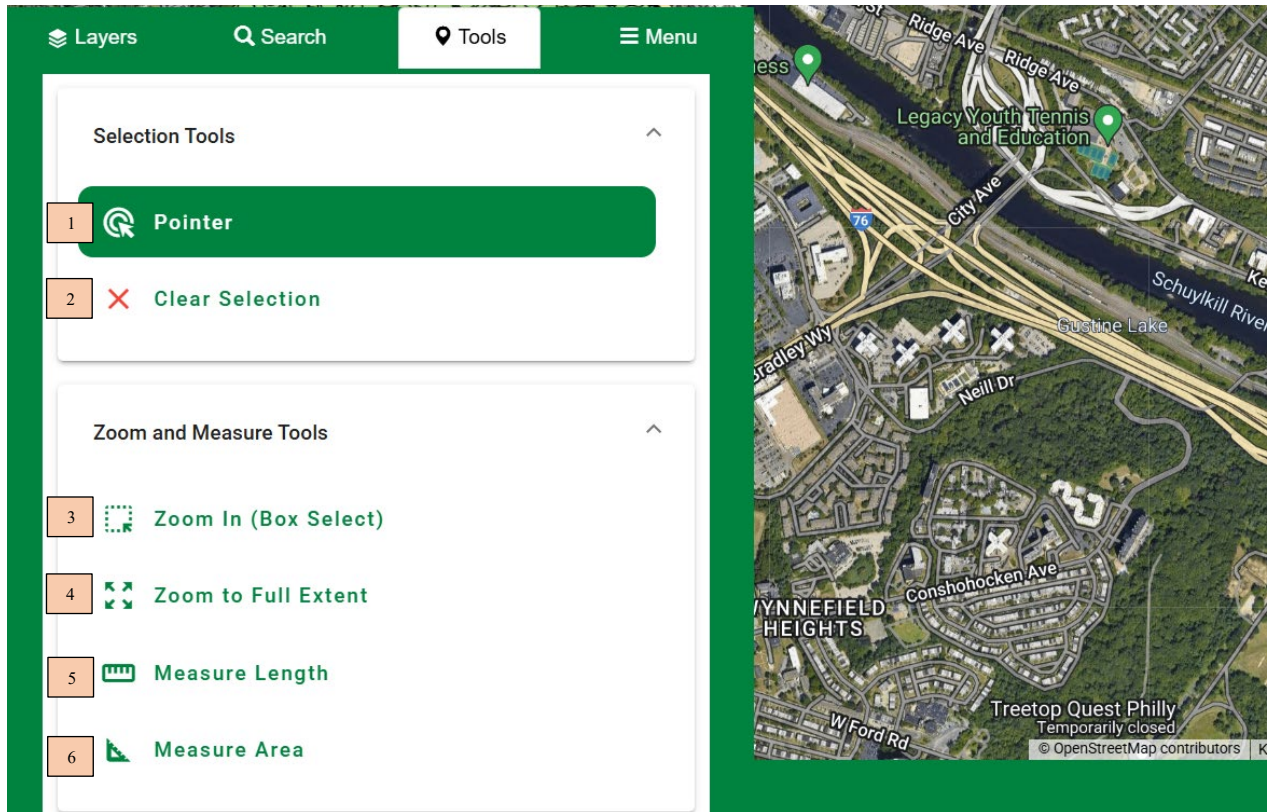
### MENU



1. FULL VERSION – Switch to Desktop Version
2. SUPPORT – Support Portal with FAQs and Instructional Videos
3. LOGIN – You are logged in as a Guest

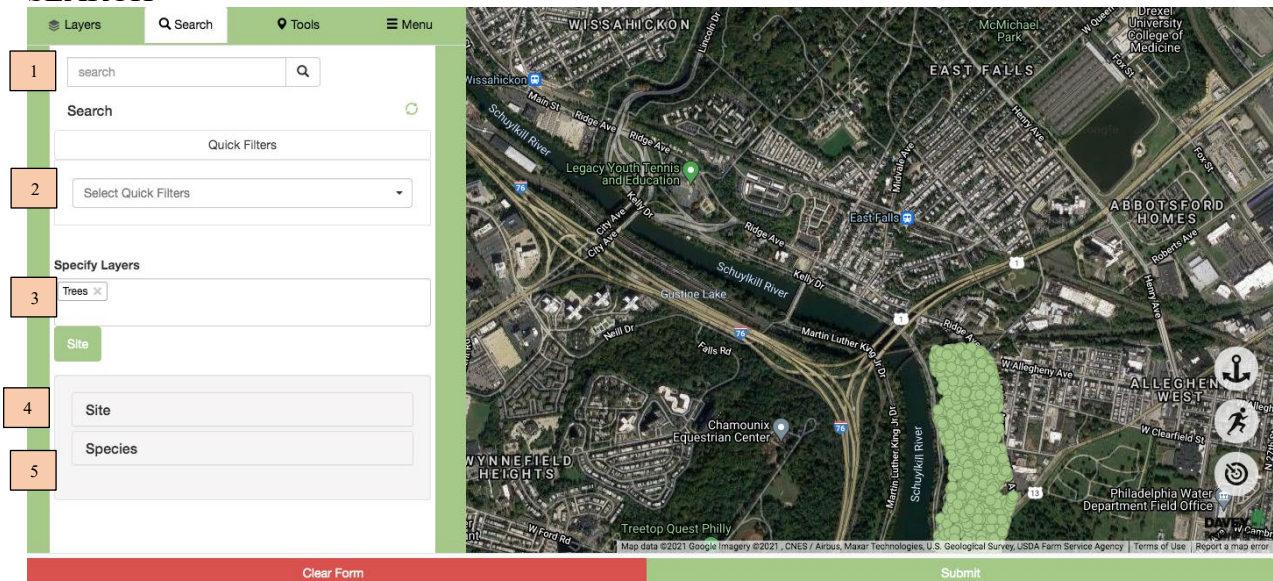


## TOOLS

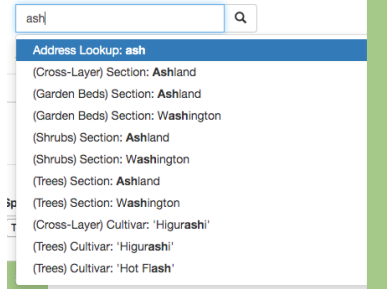


1. POINTER – Click on a site (TREE OR SHRUB) for more information
2. CLEAR SELECTION – After a search, use this tool to clear selected sites
3. ZOOM IN (BOX SELECT) – Draw a box on the map to zoom to that point
4. ZOOM TO FULL EXTENT – Zoom back out to original frame
5. MEASURE LENGTH
6. MEASURE AREA

## SEARCH



1. QUICK SEARCH – Type in anything, and the system will search for it



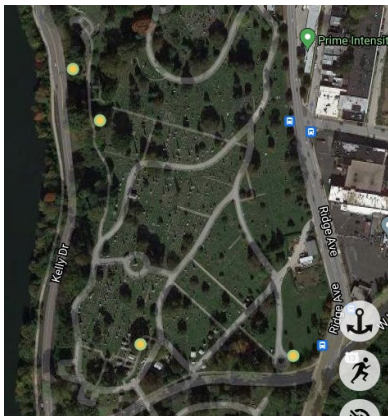
2. QUICK FILTERS – go-to searches set up by Arboretum Staff
3. In-Depth Search: SPECIFY LAYERS – choose Trees, Shrubs, or Both
4. In-Depth Search: SITE  
Search by Cemetery, Section, etc.
5. In-Depth Search: SPECIES  
Search by **Tag Number**, Species, etc.

The 'Site' search filter form includes the following fields:
 

- Cemetery**: A dropdown menu with 'Select' as the current value.
- Section**: A dropdown menu with 'Select' as the current value.
- X**: Two input fields labeled 'From' and 'To'.
- Y**: Two input fields labeled 'From' and 'To'.

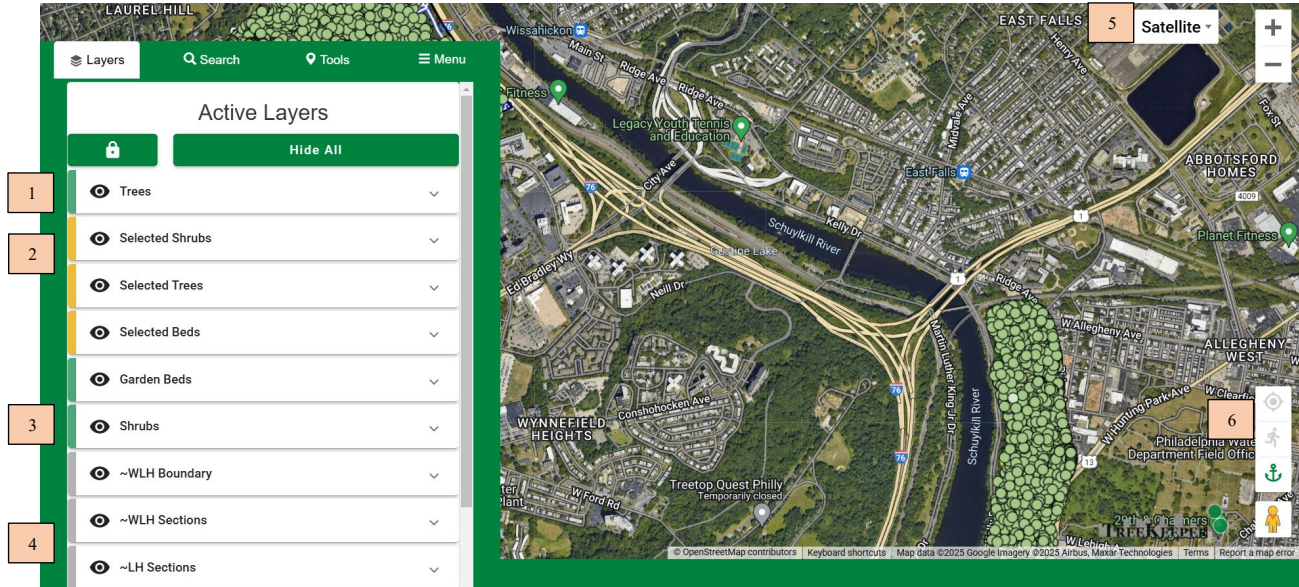
The 'Species' search filter form includes the following fields:
 

- Tag Number**: A dropdown menu with 'Select' as the current value.
- Genus Common (Botanical)**: A dropdown menu with 'Select' as the current value.
- Species**: A dropdown menu with 'Select' as the current value.
- Cultivar**: A dropdown menu with 'Select' as the current value.
- Family**: A dropdown menu with 'Select' as the current value.
- Nativity**: A dropdown menu with 'Select' as the current value.



\*When you search, search results display in orange.

# LAYERS



1. TREES – Displays all Trees (as Green Circles)
2. SELECTED SHRUBS / TREES – Displays Search Results (In Orange)
3. SHRUBS – Displays all Shrubs (Green Squares)
4. BOUNDARIES / SECTIONS – Displays Cemetery boundaries and named Section boundaries within cemeteries
5. BASE LAYERS – Choose from various Satellite or Street Views.
6. When on a mobile device with location on, you can use these buttons to locate yourself